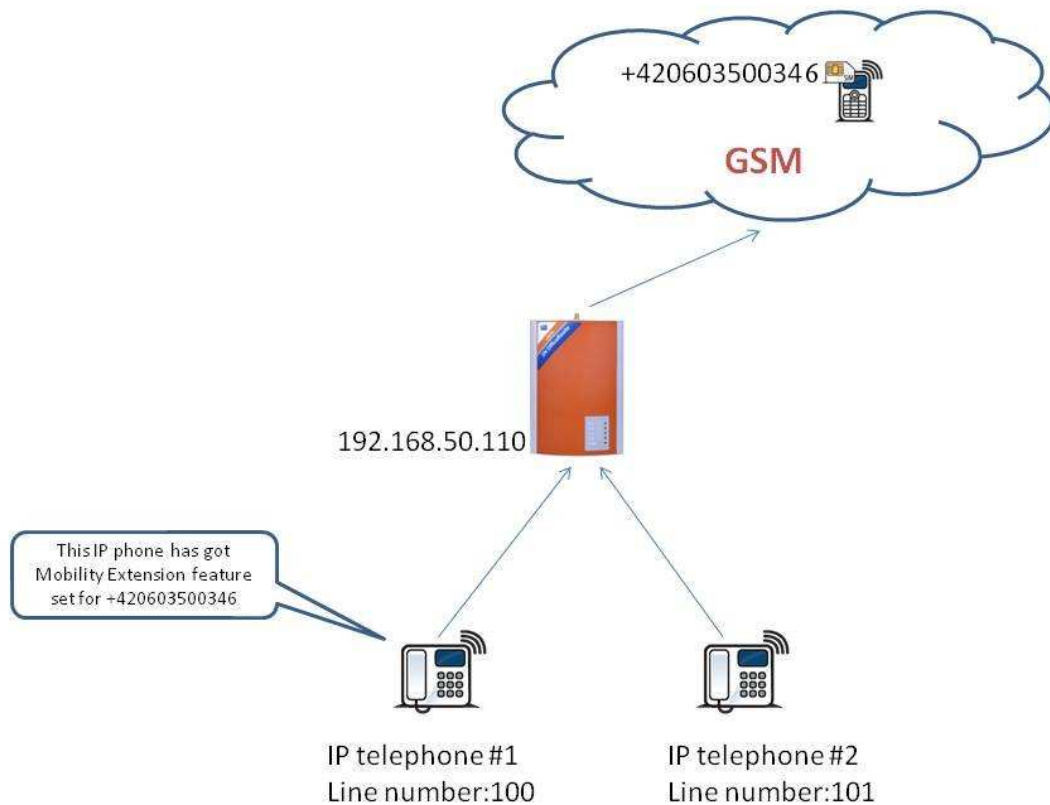


# How to setup Mobility Extension on the 2N OfficeRoute and 2N VoiceBlue Enterprise

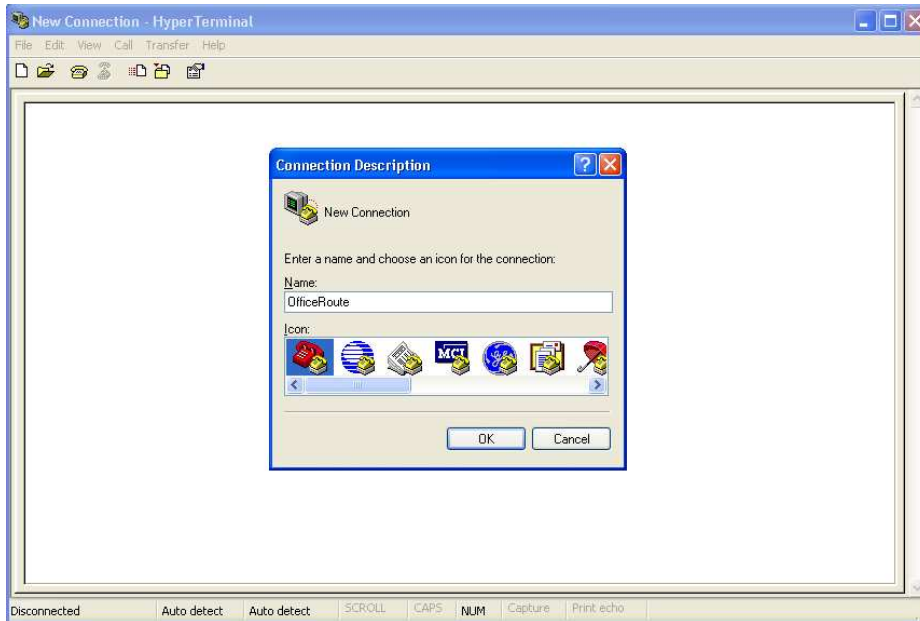
This is the manual for a firmware version 2.2.9

Our scenario:



1. Firstly you need to set up the IP address of the OfficeRoute through HyperTerminal. Default IP address is 10.0.0.1 Mask 255.0.0.0 with Login – Admin and without password. We need to change this default IP address.  
Launch the hyperterminal (Start – All programs – Accessories – Communications – HyperTerminal )

*Set up the name of connection:*



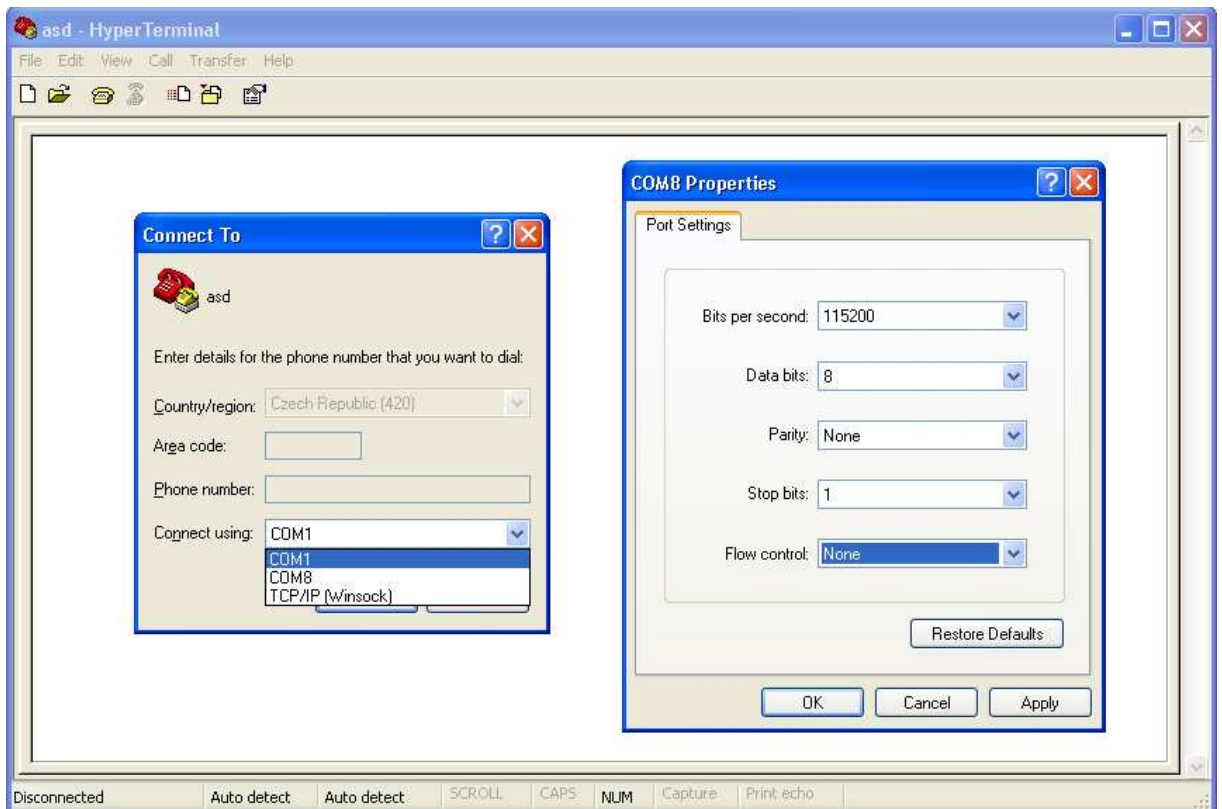
Choose the connection to OfficeRoute ( COM or TCP/IP ) and then you need to set Port Settings up with these parametres:

*Bits per second – 115200*

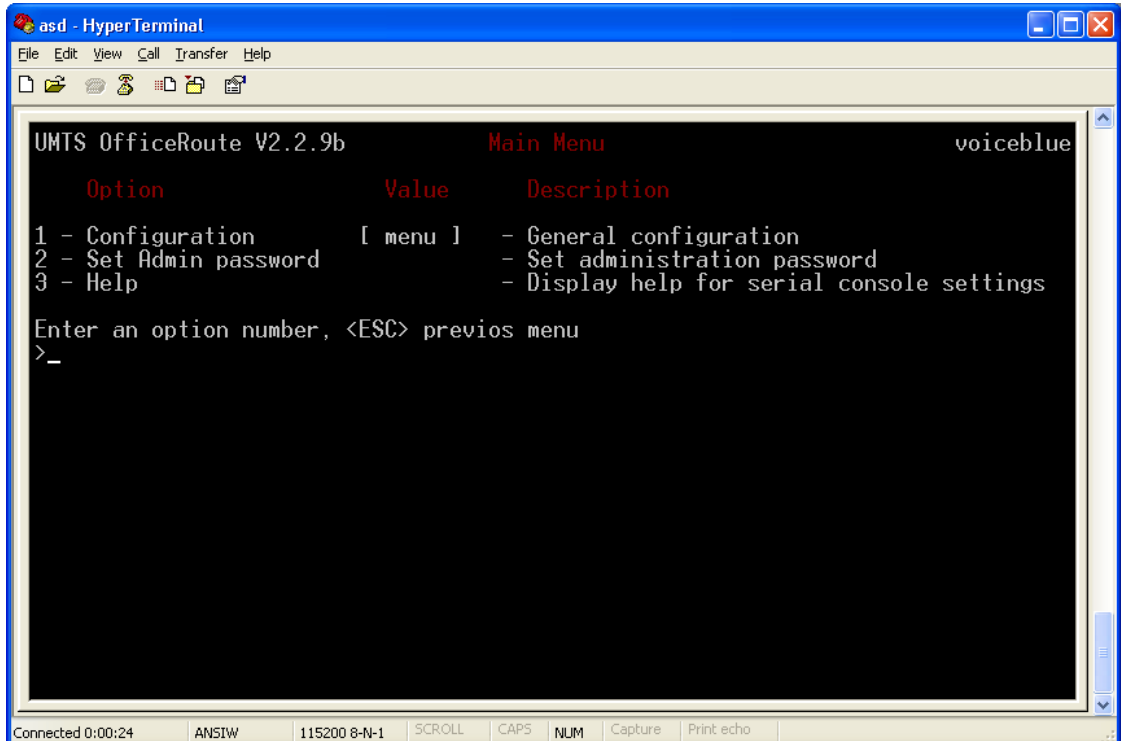
*Data bits- 8*

*Stop bits – 1*

*Flow control - None*



Press Enter and then you can set up Network settings and Admin password of the OfficeRoute.



For IP address settings, select option 1 – Configuration, 1 – Network and then 1 - IP address setting and other settings for the network communication. Change the IP address according to the picture.

```

asd - HyperTerminal
File Edit View Call Transfer Help
[Icons]
UMS OfficeRoute V2.2.9b Network Configuration Menu voiceblue

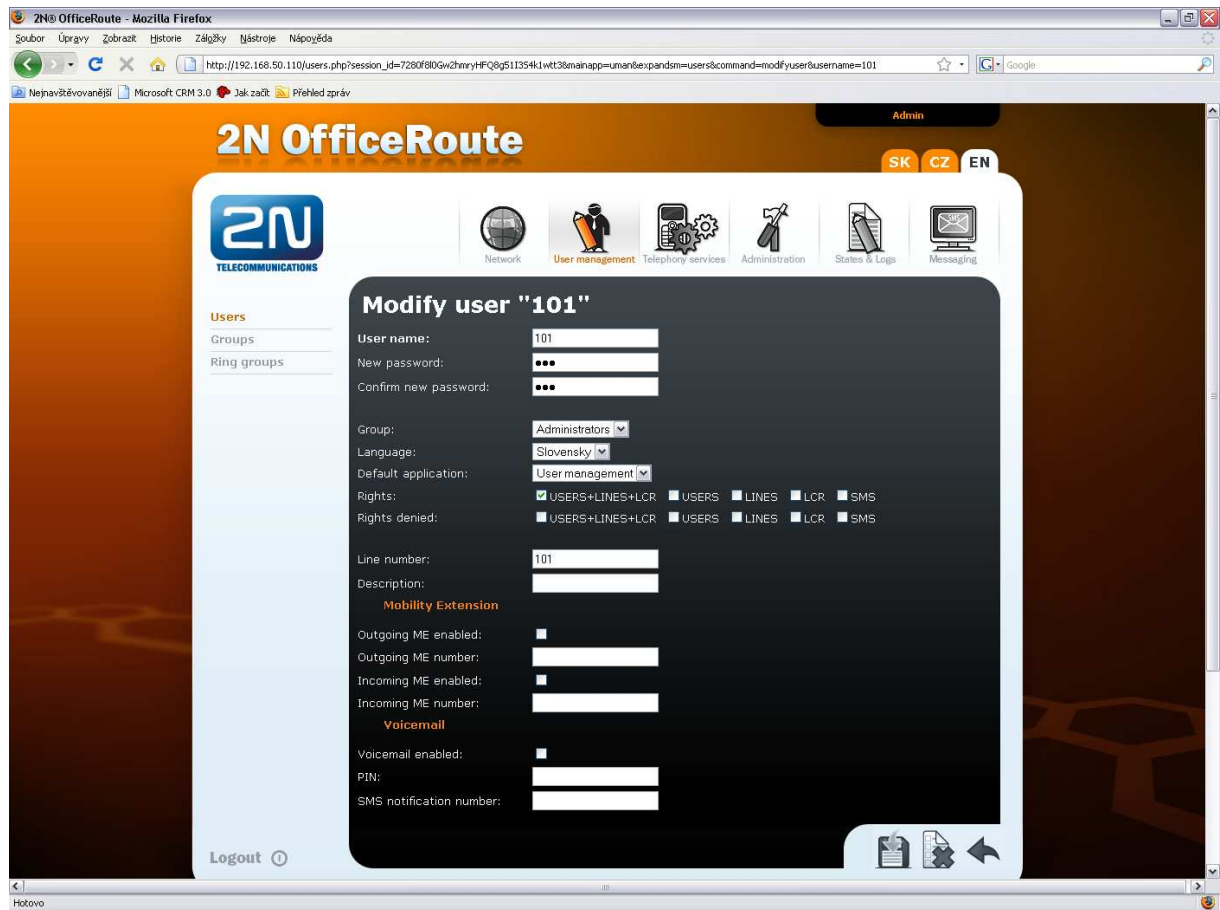
Option Value Description
1 - Address [ 192.168.50.110 ] - Internet address
2 - Network Mask [ 255.255.255.0 ] - Internet subnet mask
3 - Gateway [ 192.168.50.1 ] - Internet default gateway
4 - Routing [ menu ] - IP routing table configuration
5 - Dns1 [ 192.168.50.1 ] - DNS server 1
6 - Dns2 [ 0.0.0.0 ] - DNS server 2
7 - Host name [ "voiceblue" ] - Host name
8 - Domain [ "" ] - Domain name
9 - Dhcp [ off ] - Use DHCP on startup
01 - HW Addr [ 00:50:C2:81:F9:59 ] - Ethernet HW Address

Enter an option number, <ESC> previous menu
>_

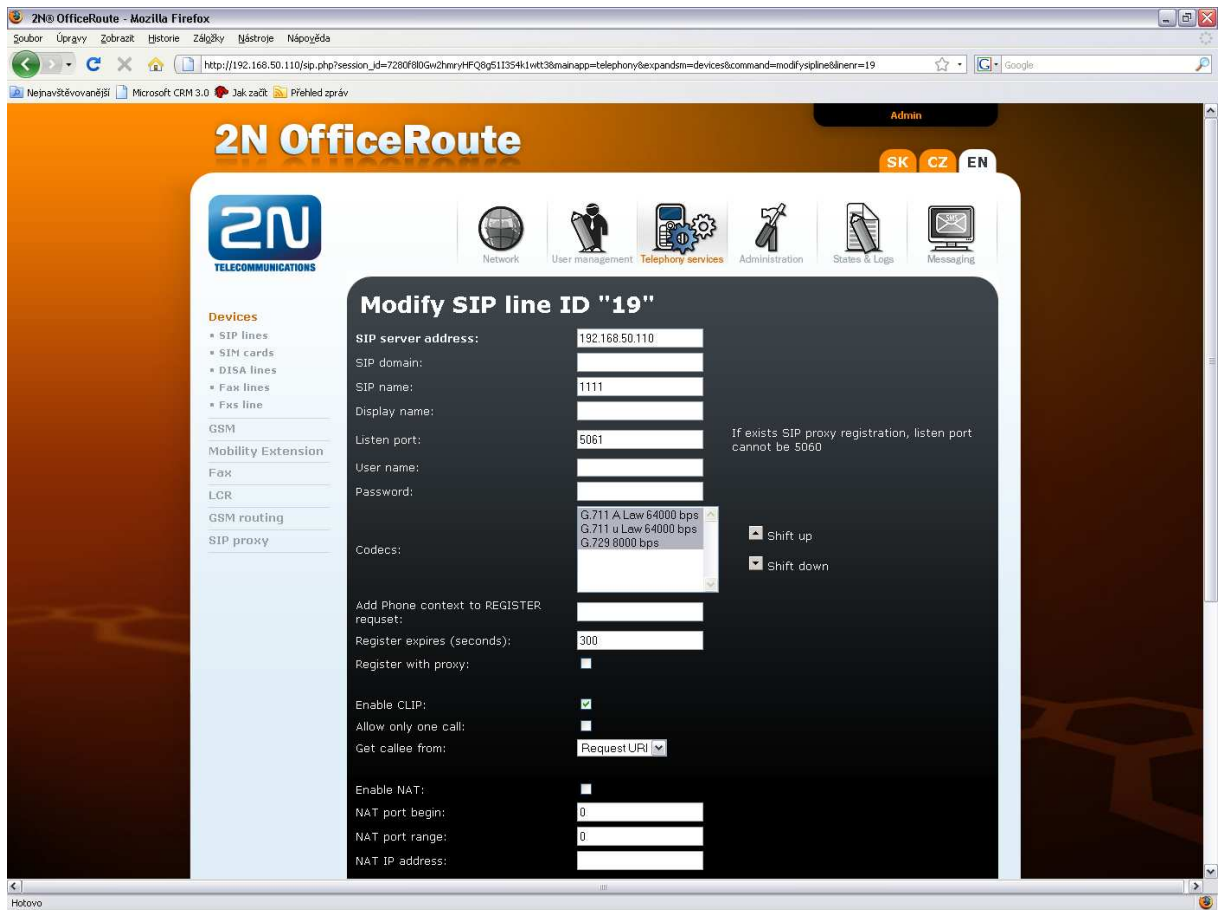
```

Connected 0:06:26 ANSIW 115200 8-N-1 SCROLL CAPS NUM Capture Print echo

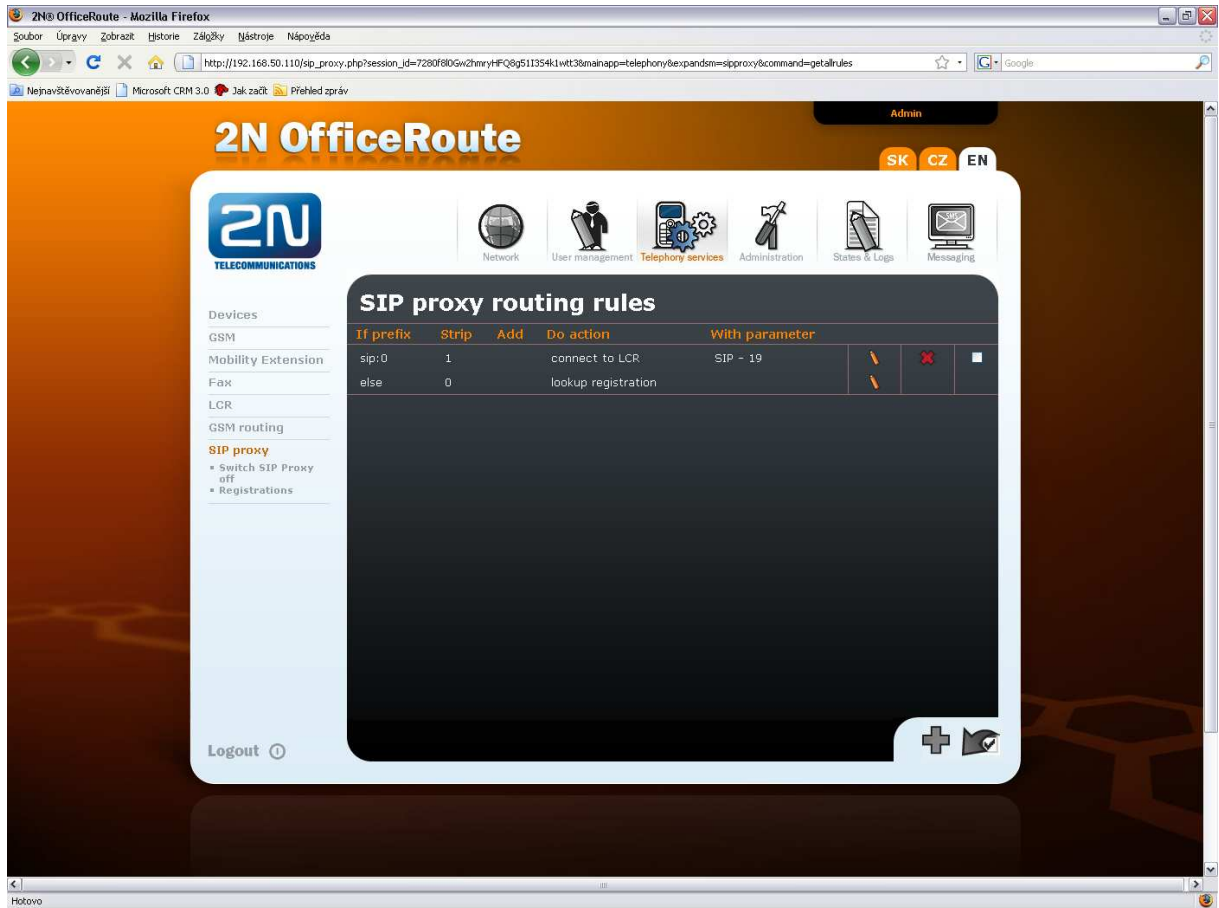
2. After we change the default IP address. We need to create users 100 and 101 in the 2N OfficeRoute (later only OFR). You can start the WEB configuration tool (fill your new IP address 192.168.50.110 into your web browser and please be aware that your PC is on the same network). When you buy a new OFR and start web configuration interface, there is a wizard which helps you to configure basic features. In this case you can skip this wizard. Go to the „User management→User“ On print screen below you can see settings of the user 101. User name and password are also 101. You can follow this picture also for user 100. Just use different username and password and also line number.



- Now we have to create internal SIP line. „Telephony services→Devices→SIP lines“ This SIP line connects two logical entities inside the OFR - SIP proxy to LCR automat. It is necessary to use the same IP address of the SIP server like the IP address of you OFR. The port for this SIP line can not be the same as a port for SIP proxy(5060).-Please use port for example 5061. Fill some SIP name. Choose codecs with Ctrl and keep “enable CLIP button” checked. When you buy a new OFR there is already created internal SIP line by default. Please just check the IP address of the SIP server, it has to be the same IP address like the address of the OFR.



4. Now we have got a connection from SIP proxy to LCR automat (SIP line number 19). Now we have to define rules in SIP proxy. "Telephony services → SIP proxy" Let's say that when you need to dial outside world, you will use prefix 0. Otherwise you will connect with SIP proxy user according to dialed number. When you dial number which begins with 0 you have to strip this digit as well. See the picture below. You should finished with two SIP proxy rules.



5. We need to create route from LCR to GSM now. "Telephony services → LCR → Routes". I chose only one GSM module in this route (GSM module-2) but you can choose more by pressing Ctrl.



6. When you create route, you need to create rule for this route. Click again LCR button and fill prefix for GSM numbers. I did it for 6 or 7. Choose your route with GSM module and also priority of selection modules in your

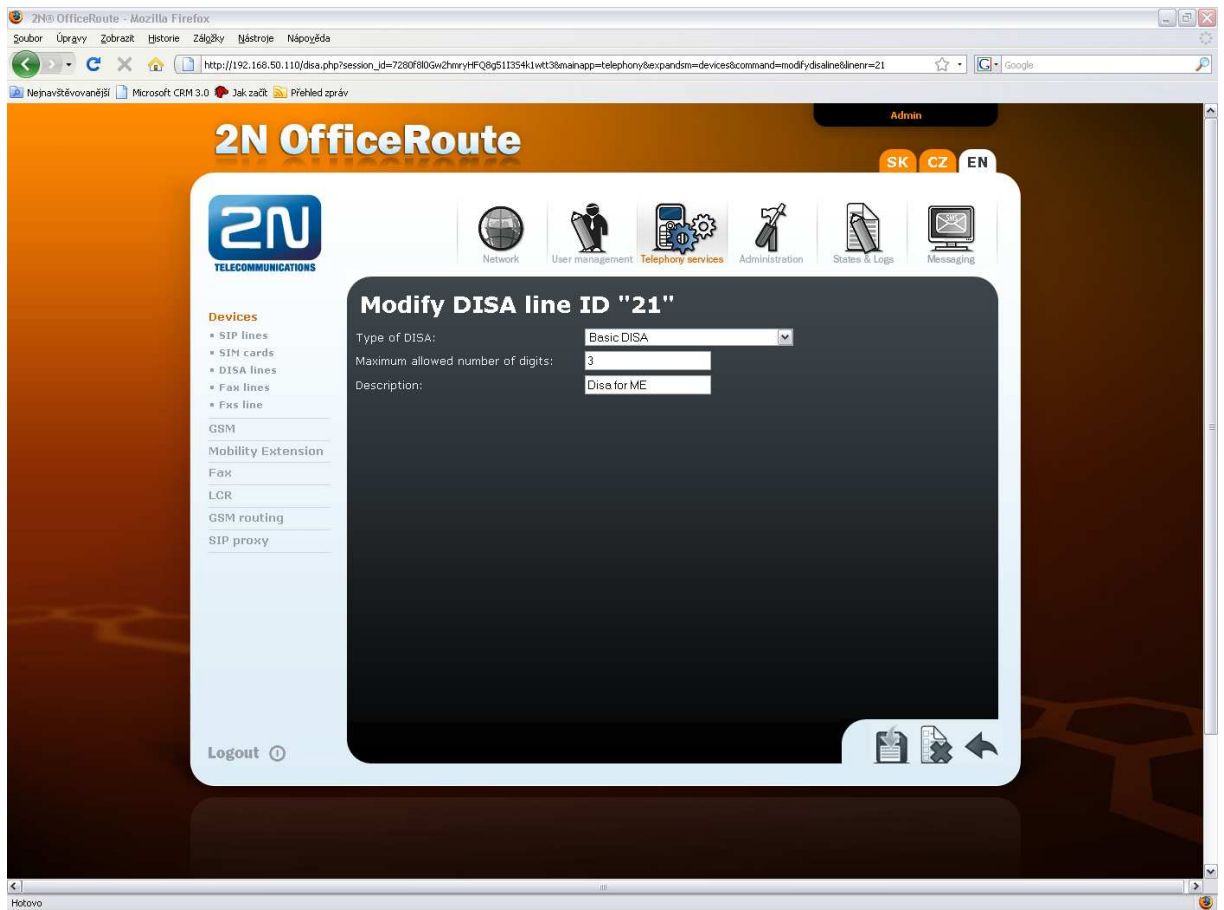
route.

The screenshot shows the 2N OfficeRoute web interface in a Mozilla Firefox browser. The page title is "2N OfficeRoute" and the user is logged in as "Admin". The interface is in English (EN) and Czech (CZ). The main navigation menu includes Network, User management, Telephony services, Administration, States & Logs, and Messaging. The left sidebar contains a menu with categories like Devices, GSM, Mobility Extension, Fax, LCR, GSM routing, and SIP proxy. The "LCR" category is expanded, showing sub-items: Time intervals, Normalization, Tariffication, Blacklist, Routes, and LCR test. The "Modify LCR table item" form is displayed with the following fields:

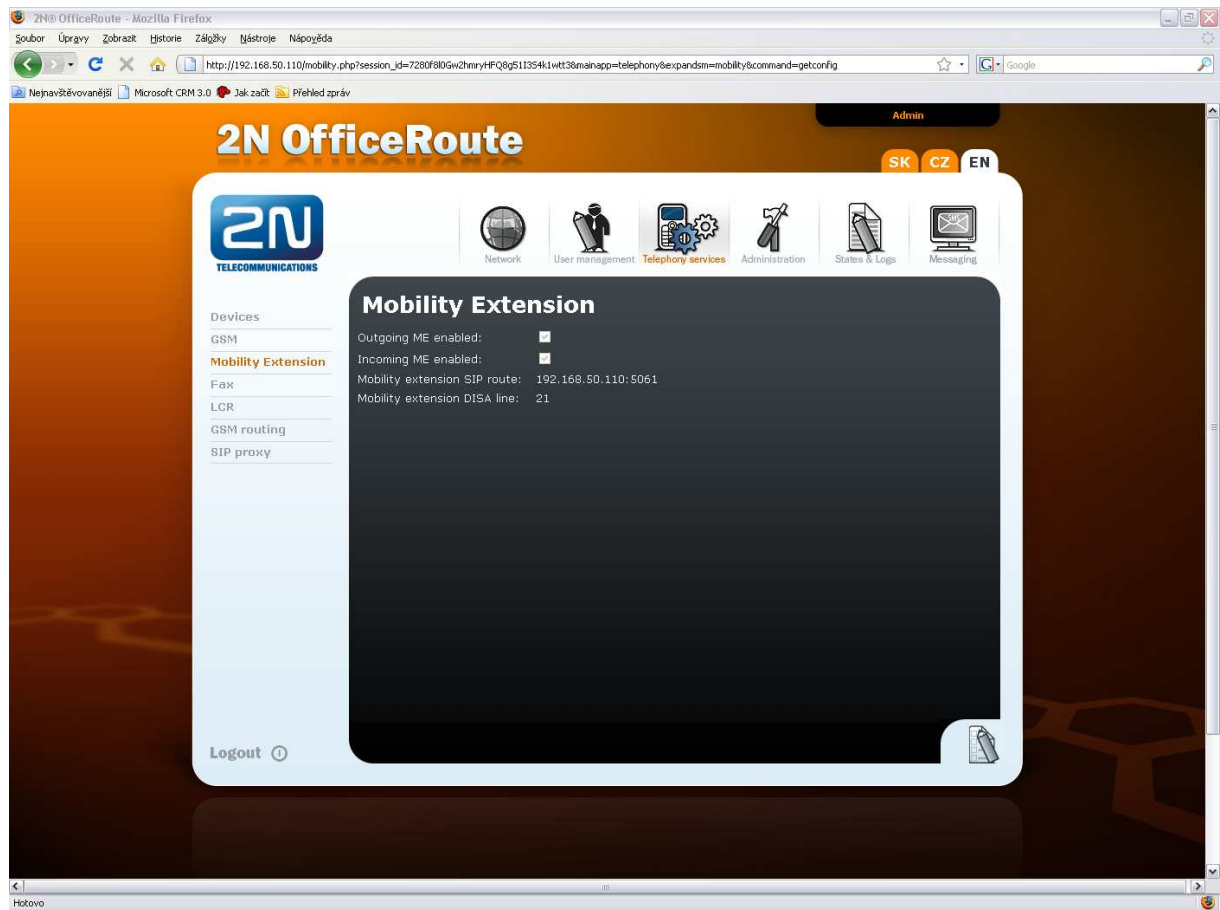
- Enabled:
- Destination name: do GSM
- Prefix 1: 6
- Prefix 2: 7
- Prefix 3: (empty) with "Add next..." button
- Description: (empty)
- Route name: to GSM with "Add route" button
- Priority type 1: First free
- Priority type 2: Unknown
- Priority type 3: Unknown
- Priority type 4: Unknown
- Description: route to GSM

The browser's address bar shows the URL: [http://192.168.50.110/lcr.php?command=modifylcr&command\\_but=modifylcrexpandsm=lcr&count\\_rows=2&session\\_id=7280f80GwZhmryHPQ8g5113541wt3&mainapp=t](http://192.168.50.110/lcr.php?command=modifylcr&command_but=modifylcrexpandsm=lcr&count_rows=2&session_id=7280f80GwZhmryHPQ8g5113541wt3&mainapp=t)

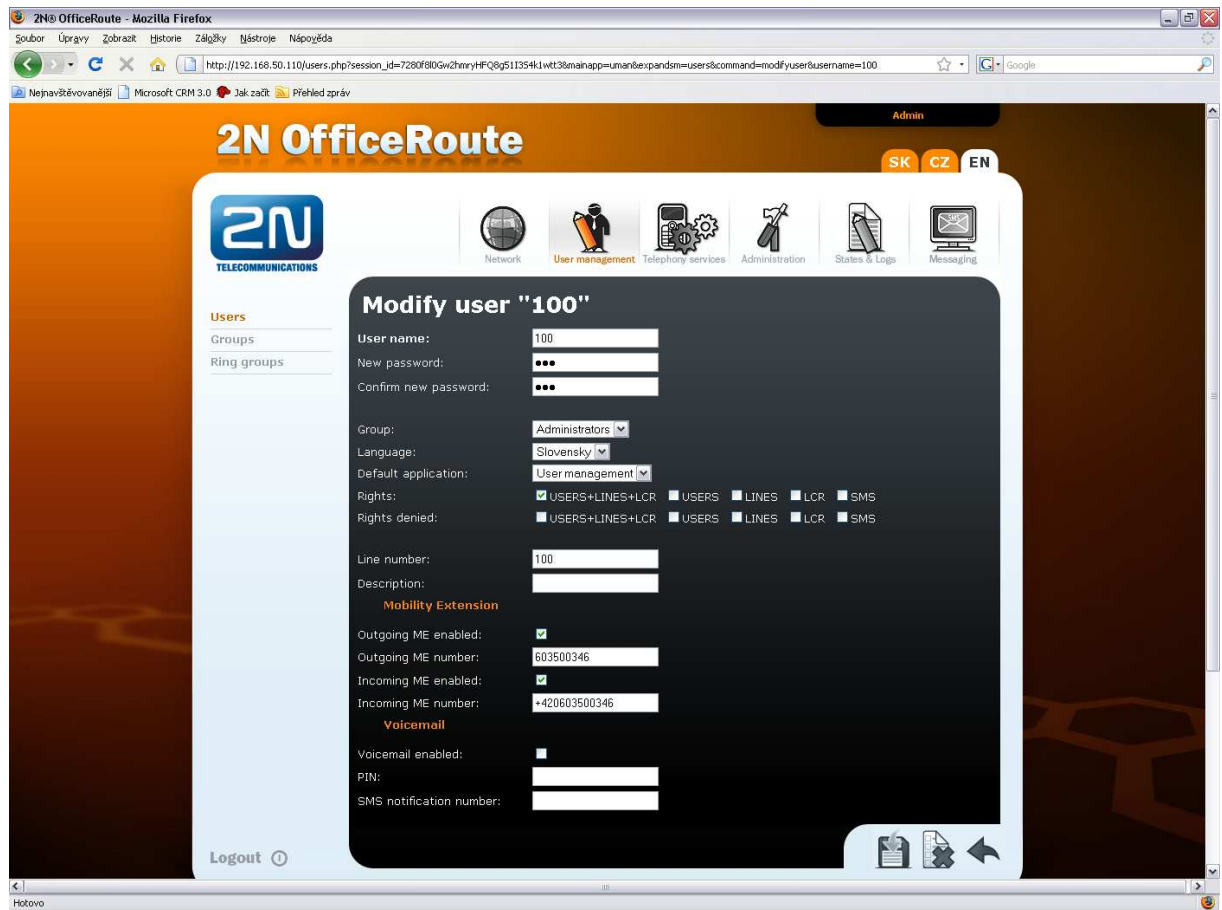
7. When you finished this step you should be able to make a call from your SIP extension to GSM network. (when your SIM in GSM module 2 is logged and your SIP phones are properly registered into the SIP proxy of the OFR).
8. When you want to set up Mobility Extension for user 100 (for example) read next a few steps. Go to the „Telephony services→Devices→DISA lines“ You have to create DISA line because of incoming Mobility Extension. In our example we created DISA line 21.



9. After that go to the „telephony services→Mobility extension“. Enable Outgoing and Incoming Mobility Extension and fill mobility extension SIP route (internal SIP line: IP address of the OFR and listening port of internal SIP line). Choose also DISA line for incoming ME.



10. Now we need to allow Mobility feature for appropriate user. Go to the „User management→Users” choose user 100 and set Mobility extension numbers. Incoming ME number must be in international format. Outgoing ME must be in format according to LCR automat rule.



11. The last thing what you need to set is: LCR rule for extension numbers. When you make incoming ME call, OFR answer this call, play DISA message and you can dial numbers. These numbers are send to LCR, so you need to create a rule for them. Typically to SIP proxy via Internal SIP line. It means that you need also route to SIP proxy.

2N OfficeRoute - Mozilla Firefox

http://192.168.50.110/gsm\_group.php?session\_id=7280f80GwZhmryHFQ8g511354klwt38mainapp=telephony&expandsm=lcrc&command=modifygsmgroup&path\_name=to

Nejnaviževovanější Microsoft CRM 3.0 Jak začít Přehled zpráv

# 2N OfficeRoute

Admin SK CZ EN

2N TELECOMMUNICATIONS

Network User management Telephony services Administration States & Logs Messaging

Devices

- GSM
- Mobility Extension
- Fax
- LCR**
  - Time intervals
  - Normalization
  - Tariffication
  - Blacklist
  - Routes
  - LCR test
- GSM routing
- SIP proxy

Logout

## Modify route "to SIP proxy"

Route name: to SIP proxy

Lines of route:

- SIP-19
- SIM card - 8342001102338212861
- SIM card - 8342020322101281045
- DISA - Disa for ME

Time intervals:

- weekdays
- weekend
- workdays

CLIP/CLIR: Default

Description: internal line to SIP proxy

Buttons: Add SIP line, Add h. 323 line, Add SIM card, Add day group, Add time range

Hotovo

2N OfficeRoute - Mozilla Firefox

http://192.168.50.110/lcr.php?command=modifylcr&command\_butt=modifylcr&expandsm=lcrc&count\_rows=2&session\_id=7280f80GwZhmryHFQ8g511354klwt38mainapp=t

Nejnaviževovanější Microsoft CRM 3.0 Jak začít Přehled zpráv

# 2N OfficeRoute

Admin SK CZ EN

2N TELECOMMUNICATIONS

Network User management Telephony services Administration States & Logs Messaging

Devices

- GSM
- Mobility Extension
- Fax
- LCR**
  - Time intervals
  - Normalization
  - Tariffication
  - Blacklist
  - Routes
  - LCR test
- GSM routing
- SIP proxy

Logout

## Modify LCR table item

Enabled:

Destination name: SIP proxy

Prefix 1: 1

Prefix 2:  Add next

Description:

Route name: to SIP proxy Add route

Priority type 1: First free

Priority type 2: Unknown

Priority type 3: Unknown

Priority type 4: Unknown

Description: internal line to SIP proxy

And that's it. You can try to make a call to extension where you have set ME feature.

Have a nice day,

2N Tech Support Team