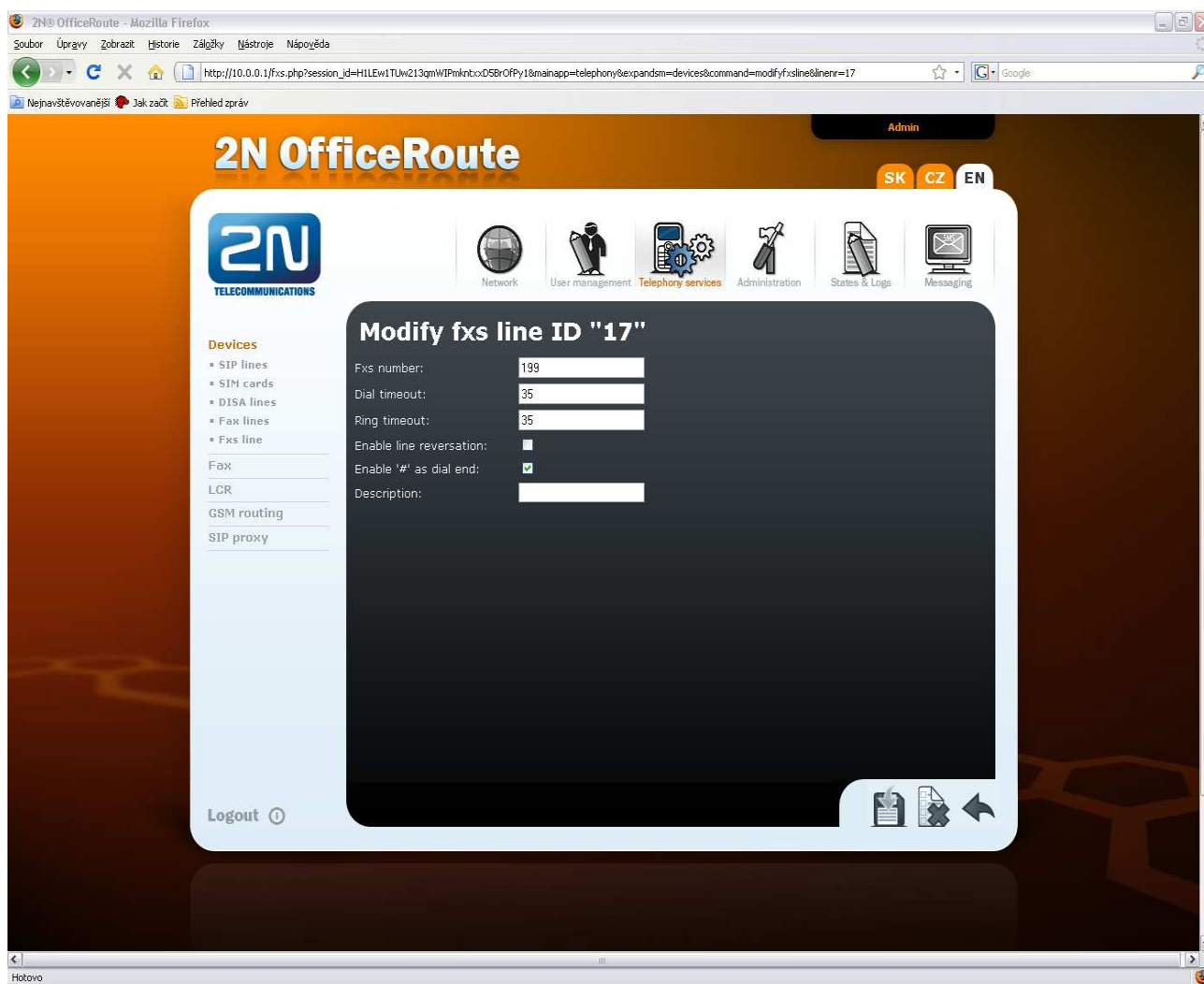


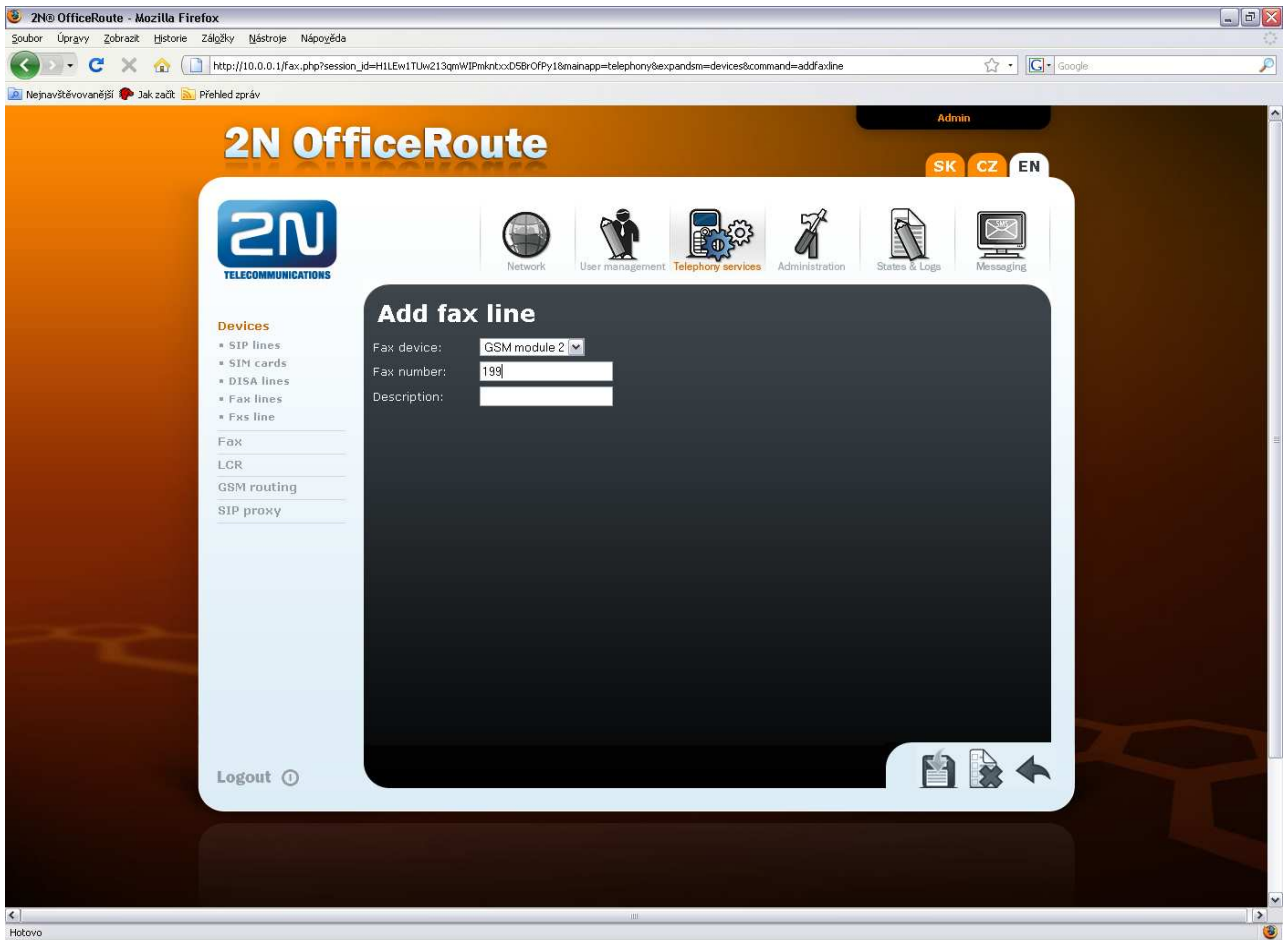
How to set up FAX on Office Route

This HOW TO GUIDE is valid only with Office Routes which has got a FXS port (analog interface)

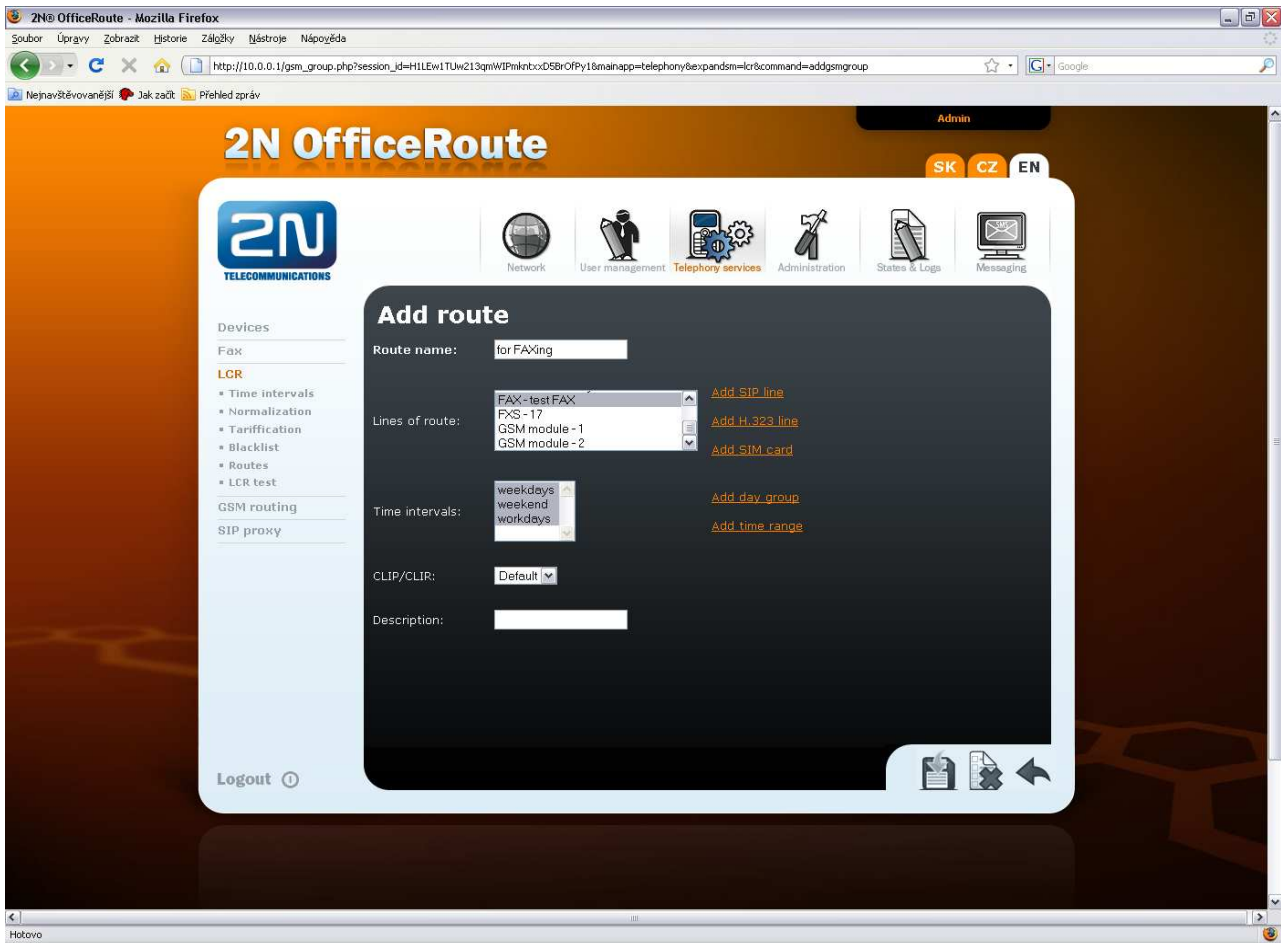
1. Open web configuration interface of the Office Route and log in.
2. At first of all you need to set up the FXS line. Configuration wizard has created this line by default but you have got a possibility to modify this line. For example to change its number. You can do it in Telephony Services→Devices→FXS line



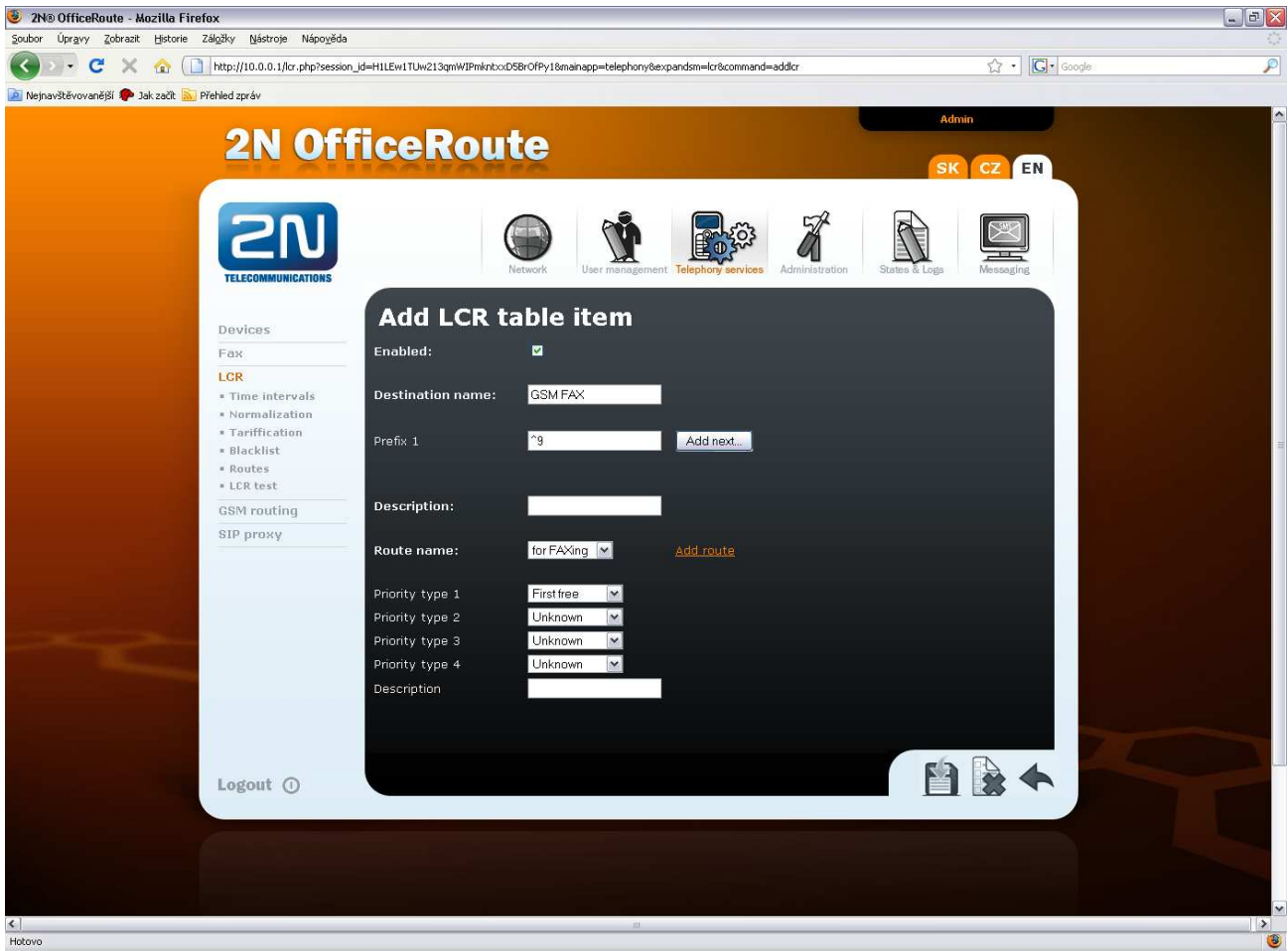
3. Then you need to create FAX line. This line IS NOT created by the configuration wizard so you have to do it manually. Go to the Telephony Services→Devices→FAX line and click + sign to add a new fax line. Choose the GSM module where is your SIM with fax number (you need to allow multinumbring on your SIM). Then fill FAX number (the same number like in your FXS line) and click save.



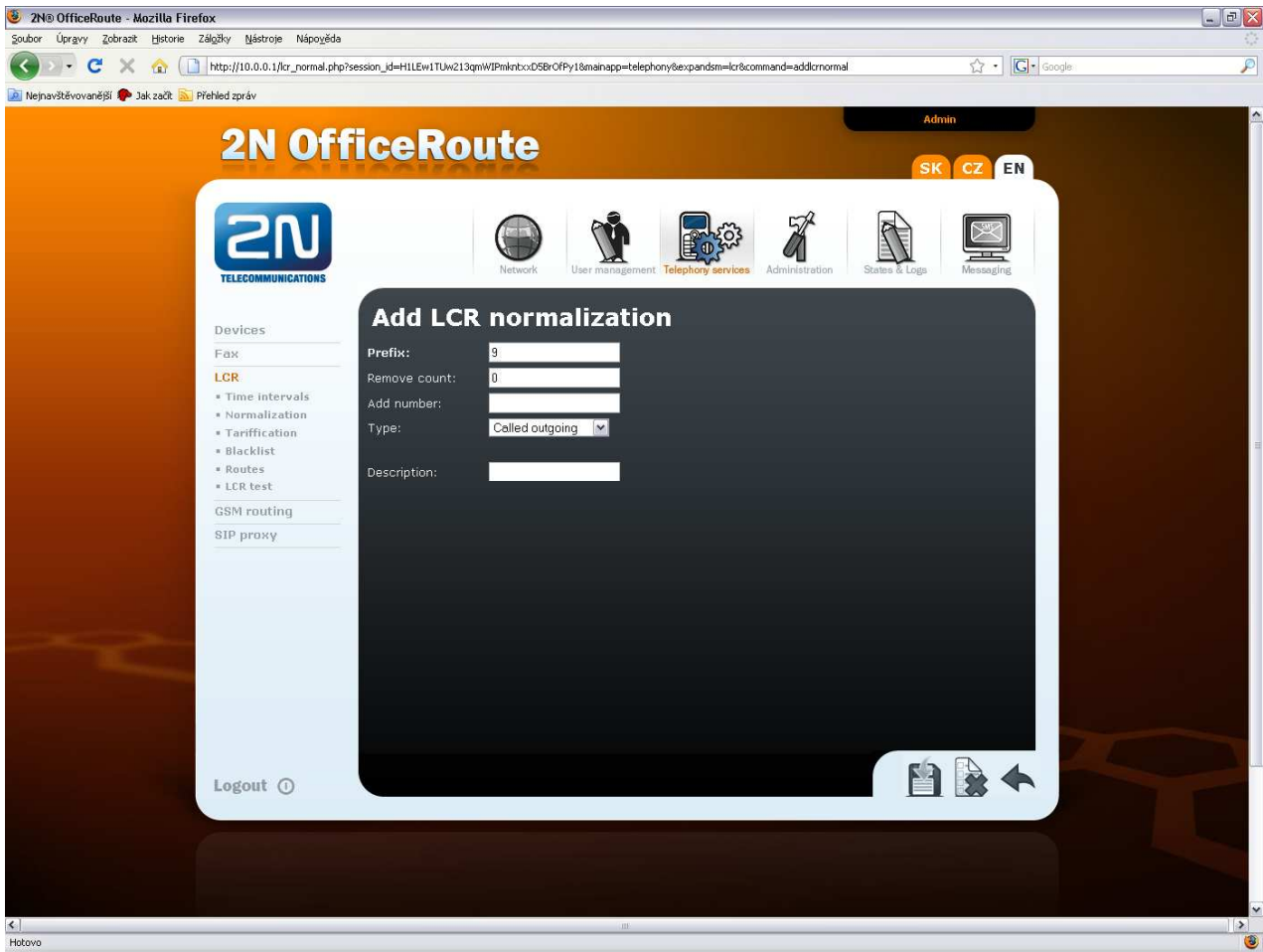
4. If you want to use more than one GSM module for FAX add another FAX line with different GSM module and the same FXS line number. (in GSM module must be also SIM with FAX number inserted).
5. Now you have created all lines what you need. Go to the LCR and create a new route with your FAX lines. Telephony services → LCR → routes. Fill a name for your route and add your FAX lines what you want to use in this route.



- When you save your new route click on LCR again because we need to create a rule for FAX route. It means that for example all your outgoing FAX calls will start with digit 9. You need to say that call with 9 at the beginning of called number will use route that includes FAX lines. Click add sign + to create a new rule. Fill Destination name (must be different then route name), fill prefix ^9 (it means all called numbers started with 9), choose route and priority that will be used to choose lines in your route (when you have got more then one lines this priority will be used). Priority must be chosen everytime. Click save.



7. When you dial FAX call you enter digit 9 at the beginning (in our case). This number is used for routing purpose but you can't dial this number to GSM network. It means that we need to strip this digit. Go to the LCR→Normalization. Add a new normalization rule. Fill prefix 9 and called outgoing type. Prefix will be removed automatically so you don't have to fill something else. Remove count keep 0. Save that.



8. Everything for outgoing FAX is set. You can check your settings in LCR TEST. Fill caller number 199 (in our case) and called according to your wish but it must start with 9. Then click save and you will see the result of normalization and used outgoing SIM card for this FAX call.



9. You don't need to set almost anything for incoming direction. GSM module recognize the incoming FAX call (because it comes to your FAX number on your SIM) and transfer this FAX to your FXS line directly. (number 199 in our case). Please make sure that in LCR settings is number 199 routed to FXS port. You have to create a rule for that with appropriate FXS line.

There is also possibility to send fax via TCP/IP. When you have got account in VoIP provider which supports T.38 protocol you can send FAX from the FXS port on your Office Route directly to your VoIP provider via TCP/IP connection. You need to do following:

1. Create a new SIP Line. Telephony Services→Devices→SIP lines. Fill VoIP provider SIP server IP address. SIP name (number or account name from VoIP provider), user name and password for authentication.
2. The rest of settings are the same like in case before. You just need to change lines in your FAX route. Instead of FAX line you will use this new SIP line.